



## Release of Global Map Serbia Version 2

*Nenad Tesla, M.Sc in Geodesy  
General Director  
Republic Geodetic Authority*



*Author*

Thanks to the cooperation between Republic Geodetic Authority (RGA) and Japan International Cooperation Agency (JICA) developed due to the implementation of The Project for Capacity Development of Digital Basic State Mapping in Serbia, a new chance for utilization of Serbian maps and geospatial data was opened – a chance to become a part of mapping society orientated to the monitoring of climate changes and environmental worldwide issues.

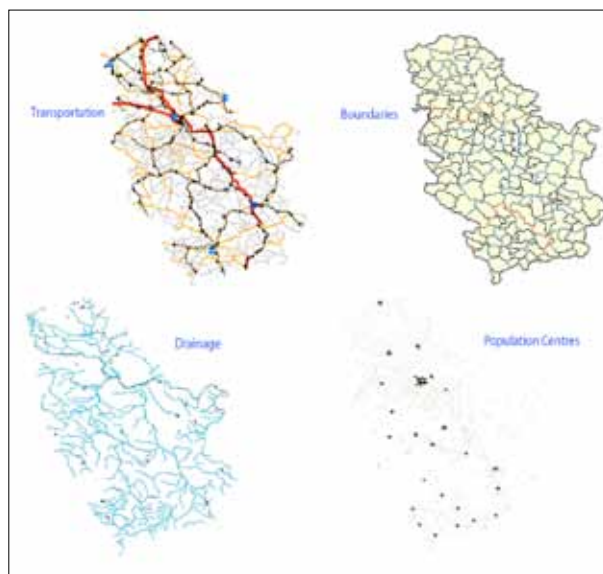
Serbia has started with the activities on Global Mapping Project in March 2011. On that moment, RGA, member of EuroGeographics Association, joined the Project as a national mapping organization and representative institution for geospatial information in the Republic of Serbia.

Development of Global Map began with the participation of RGA representative in the training program “Global Mapping for Sustainable Development”, held in Tsukuba, Japan from June 9<sup>th</sup> till August 25<sup>th</sup>, 2011. During this stay, RGA participant adjusted existing data prepared for EuroGlobalMap Project according to Global Map Specification.

All four vector layers (Transportation, Boundaries, Drainage, Population Centres) were completed and checked by the Global Map Data Check software (GMDC). Also, metadata files for all mentioned vector layers were created. At the end of the training course, Global Map Serbia has been published on the ISCGM website with four vector layers. Beside these layers, during the course development of Land Cover layer also begun, and in these days the adjustment to the Global Map Specification is on the run.

The knowledge obtained from kind ISCGM experts is transferred to other RGA engineers, which significantly increase abilities of RGA to produce and maintain Global Map layers independently.

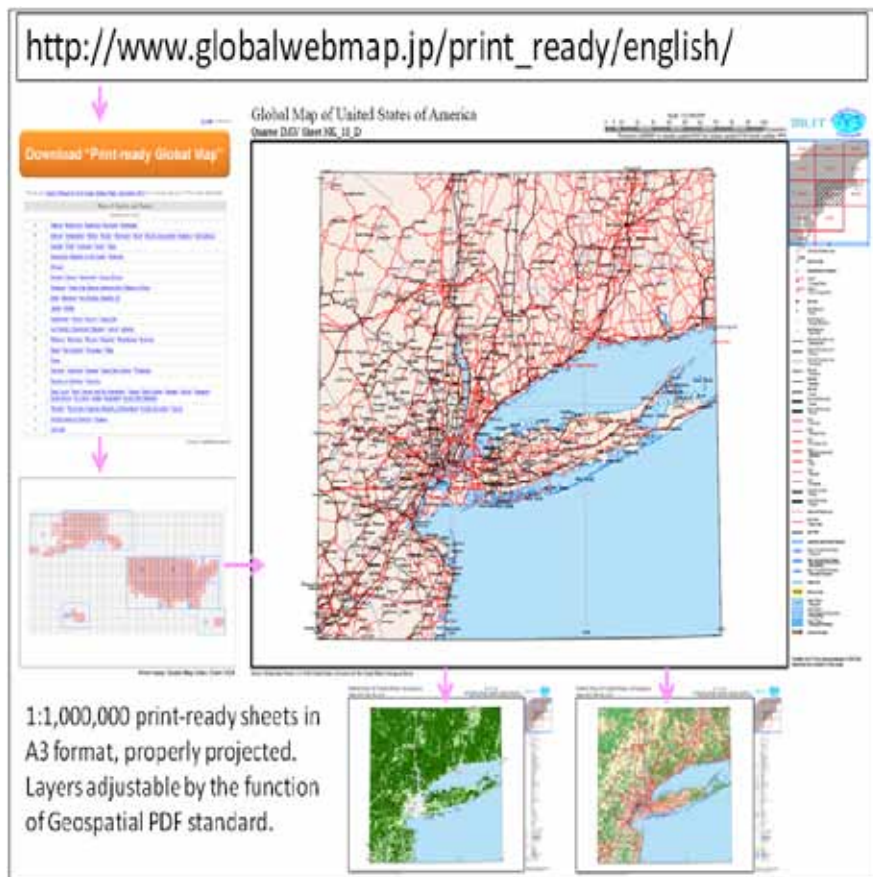
Serbia is on its way of prosper which implies a lot of work in order to preserve environment. With issuing of Version 2 of Global Map, Serbia is one step forward to the goal.



## Release of “Print-ready Global Map”

*Hidenori Fujimura*

*Director for International Cooperation, Overseas Project Division, Policy Bureau,  
Ministry of Land, Infrastructure, Transport and Tourism*



Conformal Conic projection (except for Antarctica); and the print-outs are designed to be in the exact scale of 1:1,000,000. In addition to the “Large Format Sheets” which covers each country on one or a few large format map sheets, a “Quarter IMW Sheets” designed to fit into A3 papers printable by most office printers is provided. The naming convention of the Quarter IMW Sheets is based on the legacy of the original IMW. The color scheme of the data is designed to follow the standard in paper maps. These specifications are adopted so that users can rely on the cartographic quality of the “Print-ready Global Map” when they use it in location maps and other purposes for their projects.

The Overseas Project Division of the Ministry of Land, Infrastructure, Transport and Tourism (MLIT) of the Government of Japan and the secretariat of the International Steering Committee for Global Mapping (ISCGM) have released “Print-ready Global Map” data via the Internet as a result of the study for promoting the use of Global Map data.

This study focused on the promotion of the use of the Global Map data in actual projects with no GIS software. By adopting the Geospatial PDF format, everyone can easily view, switch and print the content with Adobe Reader® which is available with no cost and virtually on all the PCs.

The cartographic specification of the “Print-ready Global Map” is based on the legacy of the International Map of the World (IMW); it adopts the Lambert

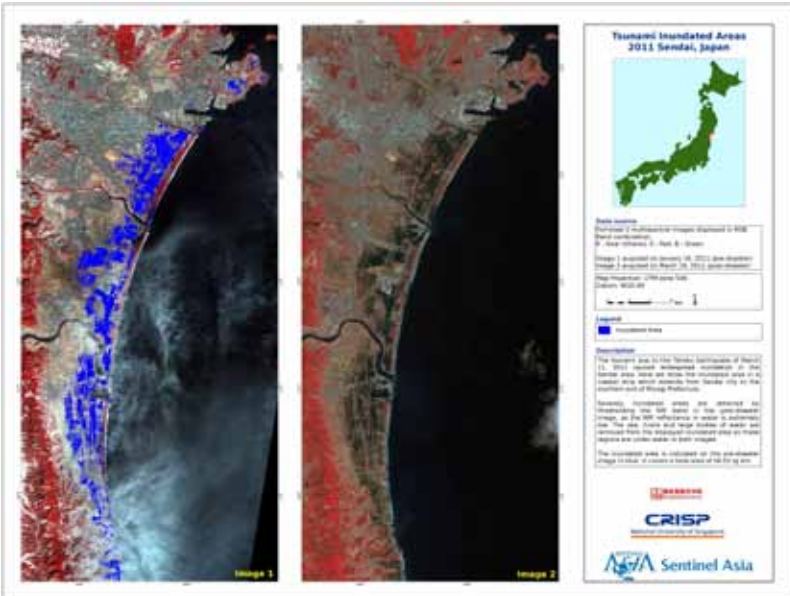
Our study was conducted in line with the clause 4. b) of Resolutions of the Eighteenth Meeting of the ISCGM in Winchester on June 25<sup>th</sup>, 2011 which states “ISCGM acknowledges that the Secretariat will develop a test conversion of Global Map data into Geospatial PDF and investigate the user needs.”

The “Print-ready Global Map” data of all the Global Map data released before the time of the data conversion at the end of August 2011, accompanied with the User’s Manual, are available at [http://www.globalwebmap.jp/print\\_ready/english/](http://www.globalwebmap.jp/print_ready/english/). Evaluation and use of our data are more than welcome. Any questions or comments on this study will be appreciated at [info@globalmap.org](mailto:info@globalmap.org).

**Sentinel Asia, Disaster Management Support Initiative in Asia and the Pacific - Collaboration with Global Mapping Project -**

*Makoto Kawai*

*Associate Senior Engineer, Satellite Applications and Promotion Center (SAPC), Japan Aerospace Exploration Agency (JAXA) - Japan*



*Image of the Great East Japan Earthquake*

Sentinel Asia is the international cooperation to assist disaster management activities in Asia and the Pacific by space technology and ICT. Sentinel Asia collaborates with space agencies and disaster management agencies. Sentinel Asia has 80 members (68 organizations from 24 countries/regions, and 12 international organizations) as of 1<sup>st</sup> March 2012.

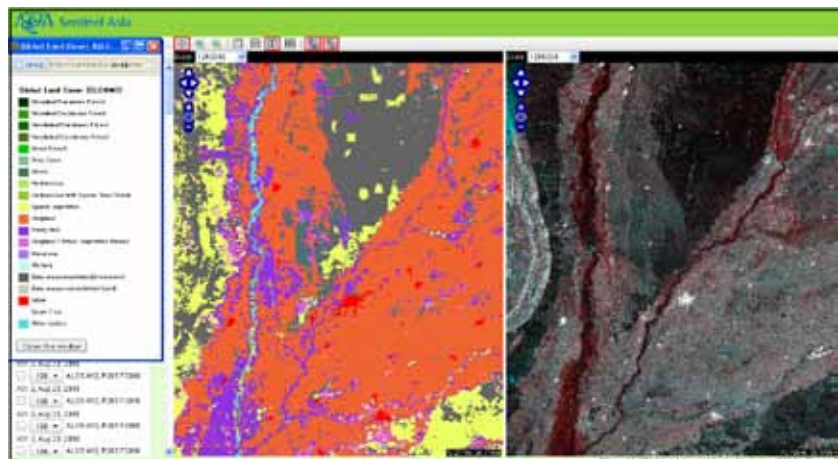
The main activity of Sentinel Asia is Emergency Observation. The members can request satellite observation when disasters happen in their countries. Based on a request to the space agencies, GISTDA, ISRO, JAXA, KARI and NARL provide their satellite images.

In addition, Sentinel Asia has four working groups: Wildfire, Flood, Glacial Lake Outburst Flood and Tsunami, to support disaster preparedness activities, and provides several training opportunities.

Sentinel Asia has a data sharing system, and all data is stored in this system. The Sentinel Asia system can transfer data by the communication satellite 'Kizuna' in addition to sharing data on web page in Japan (<http://sentinel.tksc.jaxa.jp>). Sentinel Asia has ground stations of 'Kizuna' in 11 countries as of 1<sup>st</sup> March 2012.

From 23<sup>rd</sup> February 2012, Global Land Cover Map and Percent Tree Cover Map of Global Map have been made available on web-GIS of the Sentinel Asia system as the collaboration with Global Mapping Project. Users can overlay these maps on satellite images, etc. and get more base information of disaster afflicted areas.

Now Sentinel Asia is one of the most powerful international cooperation to support disaster management. We hope a close human network which is the most fundamental underpinning of international cooperation will be strengthened through Sentinel Asia over Asia and the Pacific.



*Global Map Global Land Cover Map on web-GIS*

## From the Secretariat

### **ISCGM Informal Meeting**

An ISCGM informal meeting will be held in conjunction with the GSDI13 conference with the following schedule. We look forward to your participation.

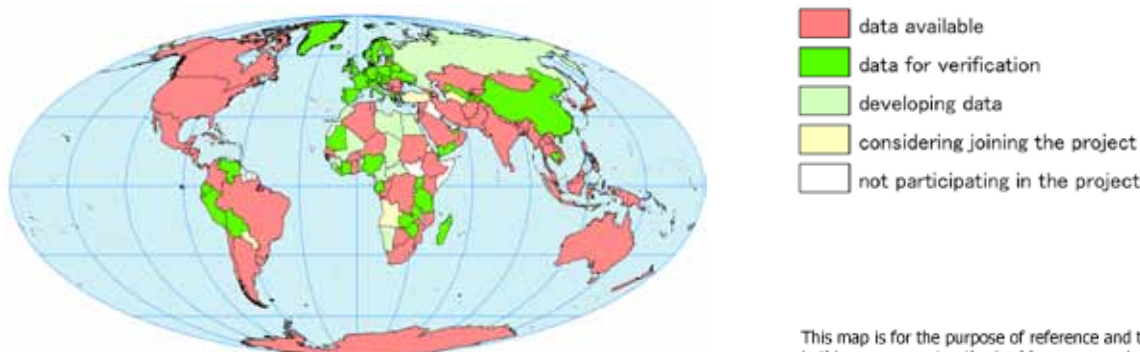
Date: Tuesday, May 15<sup>th</sup>, 2012

Time: 3:00-4:00 p.m. (provisional)

Venue: The Québec City Convention Centre, Québec, Canada

### **Global Map Data Release and Participation in the Global Mapping Project**

As of March 25<sup>th</sup>, 2012, 165 countries/16 regions participate in the Project. Among them, data of 74 countries/5 regions have been released.



This map is for the purpose of reference and the boundaries in this map are not authorized by any organizations.

## Global Map and Related Meetings

Followings are Global Map and related meetings. Information on related meetings will be highly appreciated.

### **2012**

- **6-11 May, Rome, Italy**  
FIG Working Week & Plenary
- **14-17 May, Quebec City, Canada**  
Global Geospatial Conference 2012
- **15 May, Quebec City, Canada**  
ISCGM Informal Meeting
- **24-26 May, Hangzhou, China**  
Hangzhou Forum on UN Global Geospatial Information Management
- **7-8 June, Toulouse, France**  
ISO/TC 211 34th Plenary
- **20-22 June, Rio de Janeiro, Brazil**  
Rio+20 United Nations Conference on Sustainable Development

- **31 July-9 August, New York, USA**  
10th United Nations Conference on the Standardization of Geographical Names
- **12 August, New York, USA**  
The 19th Meeting of ISCGM
- **13-15 August, New York, USA**  
Second Session of the United Nations Committee of Experts on Global Geospatial Information Management
- **25 August-1 September, Melbourne, Australia**  
XXII ISPRS Congress
- **29 October-2 November, Bangkok, Thailand**  
19th United Nations Regional Cartographic Conference for Asia and the Pacific

### **2013**

- **4-6 February, Doha, Qatar**  
Second High Level Forum on Global Geospatial Information Management



The Newsletter is distributed as information paper on Global Mapping to more than 1,200 people of NMOs, Global Map data users and other interested people of the world. Your contribution of articles, requests for subscription and provision of relevant information will be very much appreciated.

*Published by : The Secretariat of the International Steering Committee for Global Mapping (ISCGM)*

*c/o Geospatial Information Authority of Japan (GSI)  
1 Kitasato, Tsukuba-shi, Ibaraki-ken, 305-0811 Japan  
Phone : +81-29-864-6910 Fax : +81-29-864-8087  
Homepage : <http://www.iscgm.org/>  
E-mail : [sec@iscgm.org](mailto:sec@iscgm.org)*