

NEWSLETTER GLOBAL MAPPING 11

My View on Global Mapping

Dr. KIM Won Ik

Director General, National Geography Institute, Republic of Korea

I was born in the middle of World War II and spent my childhood growing-up during the Korean War. In those days I had hard time simply making a living and it is unimaginable how I survived through the turmoil. Looking back, my view of the world was narrow and limited to my personal well-being.

After the War, as the society began to be rebuilt, I was able to focus more outwardly. First, my concerns were focused on myself and my family, then my attention grew towards my neighbors and neighborhood. Eventually, I developed a deep concern for my country as well as the world.

While working in the field of surveying and mapping, I did not pay much attention to those of neighboring countries and the world, which could be expected from developing countries.

When the International Steering Committee for Global Mapping was first formed, I was invited to be a member of the steering committee from the beginning. It was an honor for me to be invited to the committee, however I was concerned as to how much I could contribute to the committee.

After participating in several successive steering committee meetings and forums, I realized the potential contribution of my role and the mutual benefits of Global Mapping worldwide. For these reasons, I have decided to continue to



take part in the Global Mapping.

We are responsible for maintaining the environment of the world for our generation and generations to come. Realization should be made that Global Mapping will play a vital role in accomplishing this crucial objective and every country in the world should participate in this meeting. Global Mapping will bring the world under a single umbrella of clean and safe environment.

We need to make conscious efforts in involving those countries that are not yet taking part in Global Mapping in the pursuit of mutual prosperity.

I hope that Global Mapping makes uncountable success in the future.

The Fifth ISCGM Meeting Will Be Held in Canberra, Australia

The fifth ISCGM meeting will be held at the Hyatt Hotel in Canberra, Australia on 20 November. This meeting will be held just after the 3rd Global Spatial Data Infrastructure Conference (GSDI3), in which Global Mapping will be widely discussed because the Global Map constitutes an important part as framework data in the Global Spatial Data Infrastructure.

Although only 5 months passes after the last meeting, this meeting will be very important for the finalization of specifications of the Global Map.

Besides specifications, there are a lot of things to be discussed such as data policy, production guidelines for the dataset as Global Mapping project is now at the initial implementation stage.

For more information, please check the ISCGM homepage:

(URL <http://www1.gsi-mc.go.jp/iscgm-sec/>)

or contact ISCGM secretariat.

The Third Global Spatial Data Infrastructure Conference (GSDI3)

The 3rd Global Spatial Data Infrastructure Conference (GSDI3) will be held in Canberra Australia on 17-19 November 1998. GSDI3 follows two previous successful GSDI conferences held in Bonn, Germany in 1996 and Chapel Hill, North Carolina, USA in 1997. The Permanent Committee on GIS Infrastructure for Asia and the Pacific (PCGIAP) is the host of this year's conference.

The theme of GSDI3 is "Policy and Organisational Framework for a GSDI".

The conference program will include invited presentations by high profile experts from government and non-government organisations, the financial community, technology suppliers, industry, the academic and research community, and user organisations. These presentations will describe the current state of national spatial data infrastructure implementation, regional and global programs, research and technology development, and user applications. Each presentation will include the speaker's views on policy and organisational issues.

Significant time will be set aside during the conference for participants to discuss the policy and organisational framework most appropriate

for GSDI implementation. The closing session will be devoted to adoption of resolutions to take the GSDI forward.

Two other significant meetings are planned for Canberra during the week of GSDI3. The PCGIAP Executive Board will meet on 16 November, and the 5th meeting of the International Steering Committee for Global Mapping will take place on 20 November 1998. In addition, major annual conferences of the Institution of Surveyors, Australia (ISA) and the Australasian Urban and Regional Information Systems Association (AURISA) take place in Launceston and Perth respectively in the week before and after GSDI3.

Further information about GSDI3 and these related events can be found on the conference web page at:

<http://www.permcom.apgis.gov.au/gsd3/index.htm>.

Members of PCGIAP and the GSDI Steering Committee look forward to welcoming delegates to Canberra Australia and making GSDI3 a milestone global spatial data event.

Bob Irwin
AUSLIG

Some Words about the Training Course on Global Mapping



Participants of Global Mapping Training Course and GSI staff

The 1998 Global Mapping (Environment) Training Course organized by the Japan International Cooperation Agency (JICA) in cooperation with GSI as the training institution is finishing, what brings us the feeling that our work is just starting.

After 10 weeks of lectures, exercises, field observations and study trips for visiting related Institutions, we could get the real dimension of what means globally mapping our Planet. By better understanding the environment and knowing better which tools and information are available, decision-makers can better cope with the current and incoming global - and local - problems.

The themes approached in the lectures connect Global Mapping with the newest technological advancements for information gathering, processing and mapping (Geo Information Systems

-
GIS, Remote Sensing-RS, Image Processing and Digital Cartography among others) as well as with the most relevant aspects, changes and is-

sues of our environment.

The great merit of the Course resides on the effort of GSI staff, and invited lecturers, to make us comprehend the importance of Global Mapping and become aware of environmental problems such as deforestation, global warming, depletion of ozone layer and emission of green house gasses, among others.

The success of the Global Mapping Training Course is related to the increasing participation and cooperation of organizations and individuals as well as the permanent incorporation of new technological advancements - on hardware, software and databases - for monitoring, analyzing and simulating more efficiently complex phenomena, attending the crescent demand of the Global Community.

Tsukuba, 1998/08/02

Teresa Cristina Veiga

IBGE – BRAZIL

Global Mapping (Environment) Course '98

A Sample of the Global Map

To visualize the contents of the Global Map is useful for getting mutual understanding on how the Global Map looks like.

The figure is one of the results in the technical study obtained by the participants of the Global

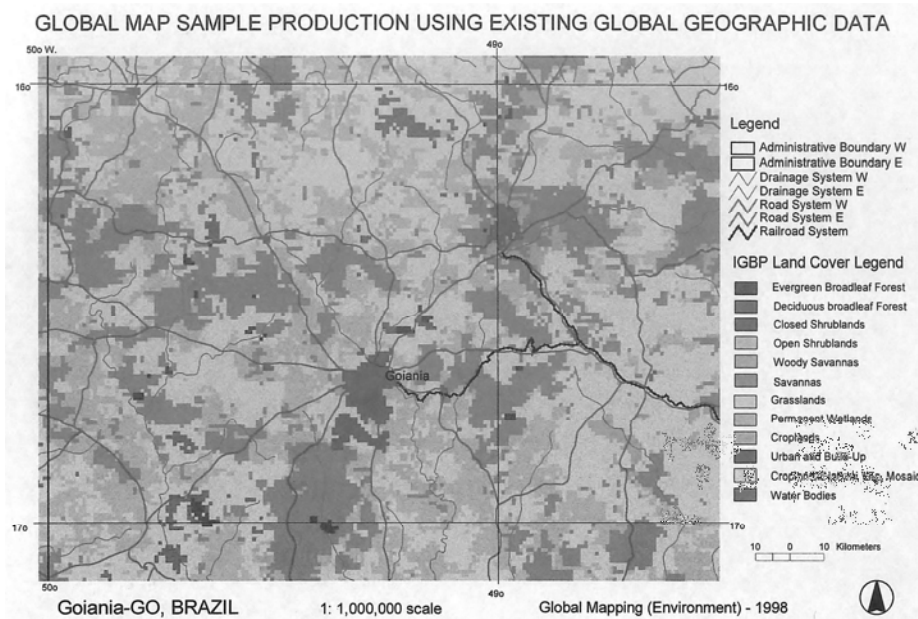
Mapping (Environment) Training Course organized by JICA in cooperation with GSI.

Although the objective of this technical study was originally to demonstrate how the Global Map is integrated from existing geographic data,

the result seems to be useful to get mutual understanding on the Global Map as well as to check the quality of existing data which are supposed to be used as the base data of the Global Map.

Sample images of the Global Map, including this one, is planned to be put on the Global Map Web site:

(<http://www1.gsi-mc.go.jp/isecgm-sec>).



Global Map and Related Meetings

Followings are Global Map and related meetings.

Meetings with "?" mark have not been fixed yet.

1998

- **17-19 November, Canberra, Australia**
3rd GSDI Conference hosted by PCGIAP
http://www.permcom/apgis.gov.au/gsdi3/con_info.htm
- **20 November, Canberra, Australia**
5th Meeting of the ISCGM
<http://www1.gsi-mc.go.jp/isecgm-sec>

1999

- **4-5 March, Vienna, Austria**
8th Plenary Meeting of ISO/TC211
- **19-23 April, Beijing, China**
5th meeting of PCGIAP

- **19-23 July, Cambridge, UK**
Cambridge Conference
- **14-21 August, Ottawa, Canada**
19th International Cartographic Conference
<http://www.ccrs.nrcan.gc.ca/ica1999/>
- **29-30 September, Kyoto, Japan**
9th Plenary Meeting of ISO/TC211
- **September/October, Washington D.C., USA**
Mapping in the New Millennium?
hosted by National Geographic Society

2000

- **16-23 July, Amsterdam, Netherlands**
ISPRS 2000

Published by: The Secretariat of the International Steering Committee

for Global Mapping (ISCGM)

*Geographical Survey Institute (GSI), Ministry of Construction of Japan
1 Kitasato, Tsukuba-shi, 305-0811 Japan*

Phone : +81-298-64-6910 Fax : +81-298-64-1804

Homepage: <http://www1.gsi-mc.go.jp/isecgm-sec>

E-mail: isecgmsec@graph.gsi-mc.go.jp